



# Campbells Bay Monitoring Report 2025

Campbells Bay is monitored by Auckland Council’s Coastal Processes Monitoring Programme to determine rates of sand gain (accretion), or sand loss (erosion), identify storm impacts, and monitor beach operations. By improving our understanding of how Auckland’s coastline changes over time, we can make more informed decisions to manage coastal hazards, guide beach maintenance, and support the resilience of our beaches into the future.



Scan the QR code to check out all beach data here.

This report presents changes at Campbells Bay over the last year. Check out the latest [State of Environment report](#) to explore long-term trends of beach change in Tāmaki Makaurau or [click here](#) to learn more about how we measure and describe changes at the coast.

## Observed Coastal Change

The Coastal Processes Programme monitors sand levels at Campbells Bay with 2 profile lines running perpendicular to the shoreline (Figure 1). These long-term records help us track changes in beach width and beach volume over time.

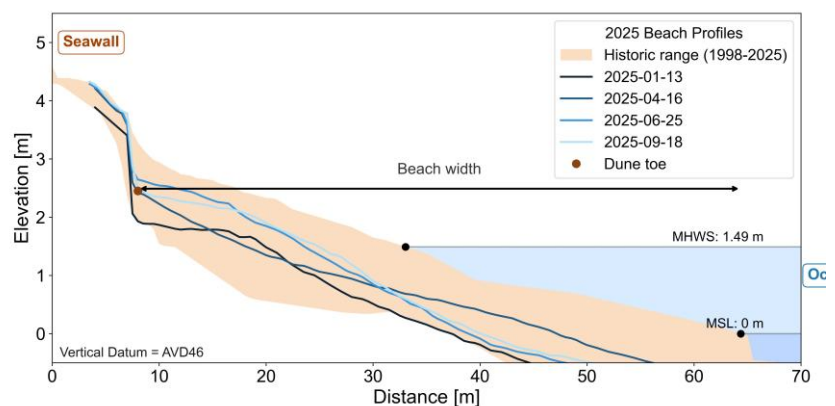


**Figure 1:** Location of the 2 monitored beach profiles at Campbells Bay. The representative profile shown in Figure 2 is highlighted with a black border. All beaches included in this reporting scheme are shown on the right-hand side map of Auckland.

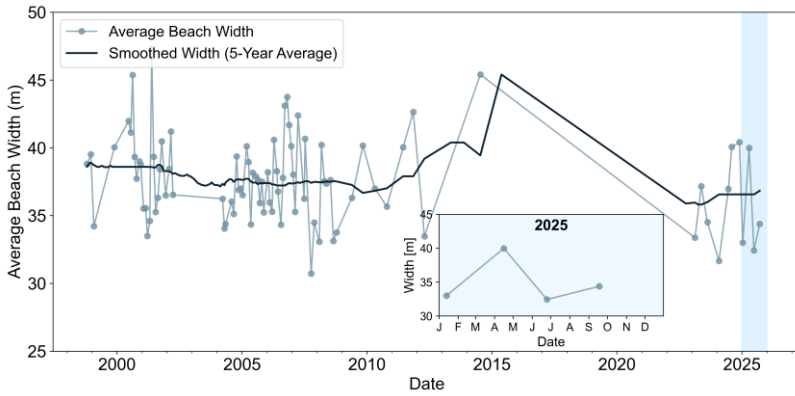
### Change in sand levels:

Figure 2 shows historic sand levels at Campbells Bay Profile 1, from the seawall down to the water level.

In 2025, sand levels across the beach fluctuated within the lower half of the historic range (Figure 2). In January, levels dropped to the bottom of the range at the upper beach but increased through the year. At the lower beach, sand levels rose in April before declining again, leading to a steepening beach profile.



**Figure 2:** Changes in sand levels at Campbells Bay P1. Mean Sea Level (MSL) represents the average mid-tide level, Mean High Water Springs (MHWS) marks the average high-tide line. Beach width is the distance between seawall toe and MSL.



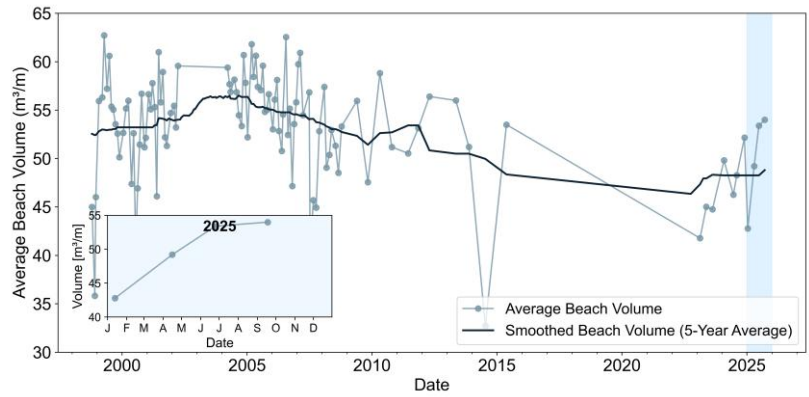
**Figure 3:** Beach-wide averaged width (calculated between seawall toe and MSL) at Campbells Bay.

### Change in beach width:

Campbells Bay shows long-term erosion, with a slight reduction in average beach width over time and notable short-term fluctuations driven by locally to regionally generated storm waves (Figure 3).  
In 2025, average beach width increased by around 7 m between January and April, then decreased by a similar amount by July, followed by a slight recovery by October.

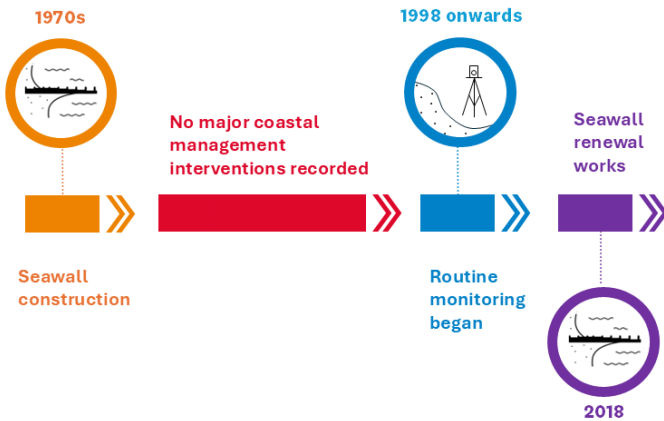
### Change in beach volume:

Since consistent monitoring began in the 1990s, the amount of sand at Campbells Bay has reduced (Figure 4).  
However, this year average beach volume at Campbells Bay has increased considerably since January with sediment deposition concentrated at the upper beach (Figure 2). As a result, changes in beach width at MSL shown in Figure 3 do not reflect this (Figure 4).



**Figure 4:** Beach-wide averaged volume (calculated above MSL) at Campbells Bay.

## Coastal Management Activities



### What has been going on?

Following the seawall construction in the 1970s Campbells Bay has experienced limited coastal management activities focussing only on renewal of the existing seawall in 2018. There have also been private seawall renewal works since 1998.  
To learn more about how Auckland's coastline is being managed checkout [Auckland's Shoreline Adaptation Plans](#).

# CAMPBELLS BAY

**2** BEACH PROFILES are used to monitor Browns Bay

**137** SURVEYS RECORDED a detailed monitoring record

**4** SURVEYS A YEAR beach is surveyed every 3 months

**27** YEARS OF DATA tracking coastal change at Browns Bay

**1998** START monitoring began over two decades ago